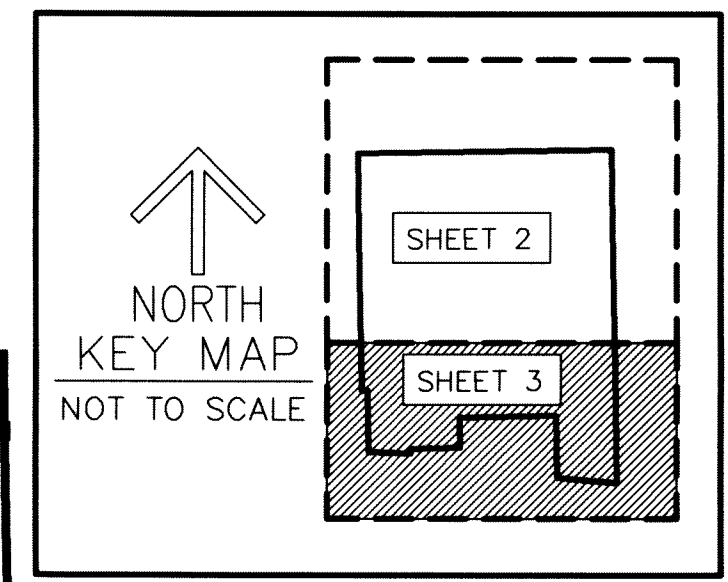


THIS INSTRUMENT PREPARED BY
 DAVID P. LINDLEY
 OF
CAULFIELD and WHEELER, INC.
 SURVEYORS - ENGINEERS - PLANNERS
 7900 GLADES ROAD, SUITE 100
 BOCA RATON, FLORIDA 33434 - (561)392-1991

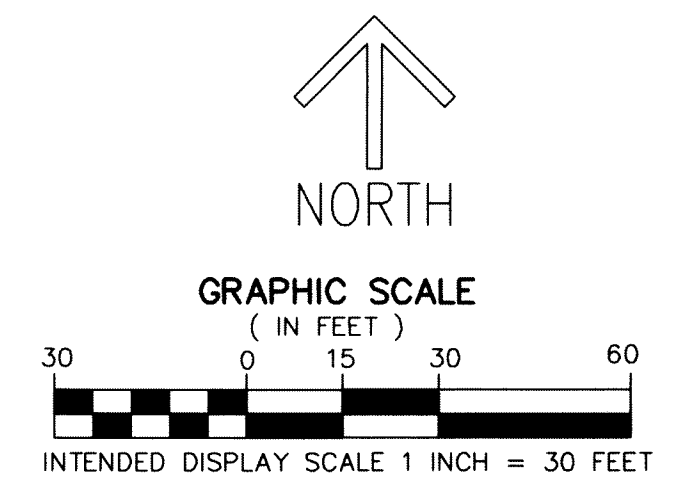
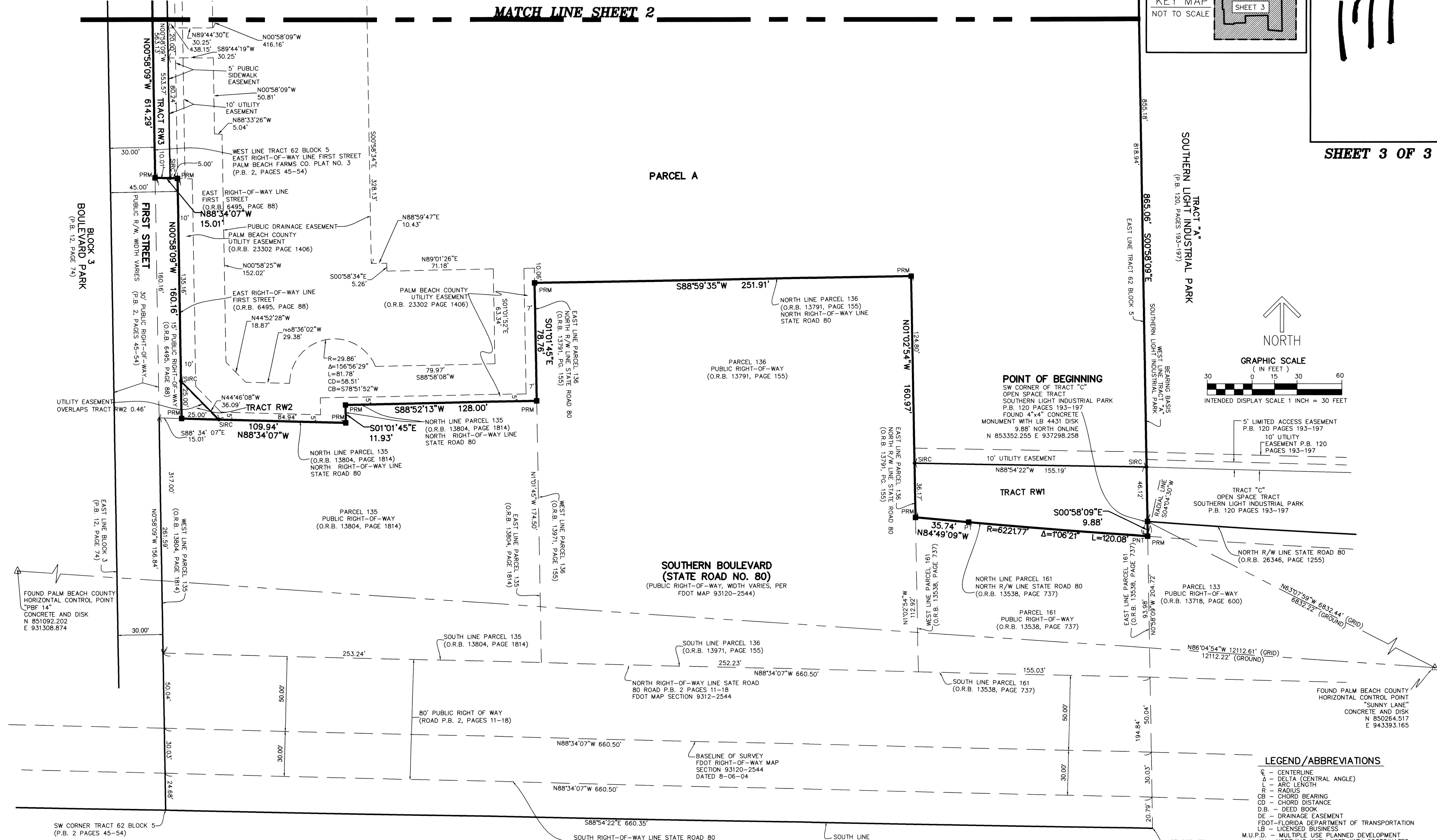
AHS PINE RIDGE PUD

BEING A REPLAT OF A PORTION OF TRACT 62, BLOCK 5, PALM BEACH FARMS CO. PLAT NO. 3,
 AS RECORDED IN PLAT BOOK 2, PAGES 45 THROUGH 54 OF THE PUBLIC RECORDS OF PALM BEACH COUNTY,
 FLORIDA, LYING IN SECTION 34, TOWNSHIP 43 SOUTH, RANGE 42 EAST, PALM BEACH COUNTY, FLORIDA



171

SHEET 3 OF 3



NOTES
COORDINATES, BEARINGS AND DISTANCES
 COORDINATES SHOWN ARE GRID
 DATUM = NAD 83 1990 ADJUSTMENT
 ZONE = FLORIDA EAST
 LINEAR UNIT = US SURVEY FEET
 COORDINATE SYSTEM 1983 STATE PLANE
 TRANSVERSE MERCATOR PROJECTION
 ALL DISTANCES ARE GROUND UNLESS OTHERWISE NOTED
 SCALE FACTOR = 1.000032316
 GROUND DISTANCE X SCALE FACTOR = GRID DISTANCE
 BEARINGS AS SHOWN HEREON ARE GRID DATUM,
 NAD 83 1990 ADJUSTMENT, FLORIDA EAST ZONE.

LEGEND/ABBREVIATIONS

- C - CENTERLINE
- Δ - DELTA (CENTRAL ANGLE)
- L - ARC LENGTH
- R - RADIUS
- CB - CHORD BEARING
- CD - CHORD DISTANCE
- D.B. - DEED BOOK
- DE - DRAINAGE EASEMENT
- FDOT - FLORIDA DEPARTMENT OF TRANSPORTATION
- LB - LICENSED BUSINESS
- M.U.P.D. - MULTIPLE USE PLANNED DEVELOPMENT
- N - NORTHING WHEN USED WITH COORDINATES
- E - EASTING WHEN USED WITH COORDINATES
- P.B. - PLAT BOOK
- O.R.B. - OFFICIAL RECORD BOOK
- P.M. - PLAT MAP
- PNT - POINT OF NON-TANGENCY
- PT - POINT OF TANGENCY
- PUD - PLANNED UNIT DEVELOPMENT
- R/W - RIGHT-OF-WAY
- SIRC - DENOTES SET 5/8" IRON ROD WITH CAP
- STAMPED "O&W LB#3591"
- UE - UTILITY EASEMENT
- PRM - INDICATES SET 4" X 4" X 24" CONCRETE PERMANENT REFERENCE MONUMENT WITH ALUMINUM DISK STAMPED "PRM C&W LB3591" UNLESS OTHERWISE NOTED
- △ - DENOTES HORIZONTAL CONTROL POINT